

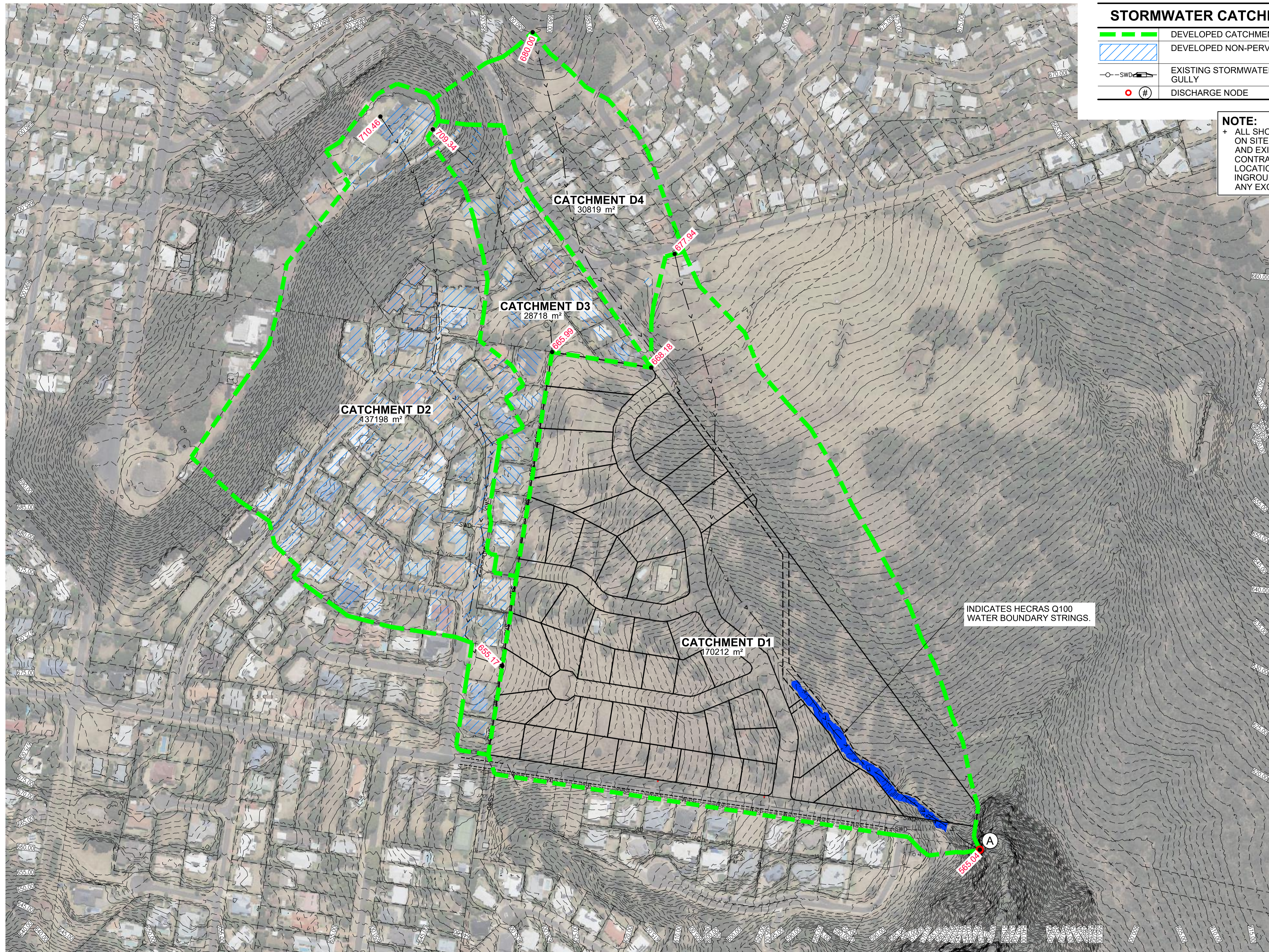
ATTACHMENT 5

Amended Stormwater Catchment Plan

Prepared by:

Kehoe Myers



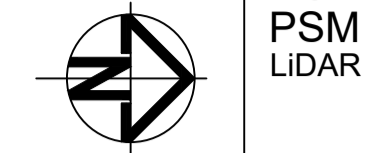


STORMWATER CATCHMENT LEGEND

	DEVELOPED CATCHMENT BOUNDARY
	DEVELOPED NON-PERVIOUS AREAS
	EXISTING STORMWATER PIPE, MANHOLE AND GULLY
	DISCHARGE NODE

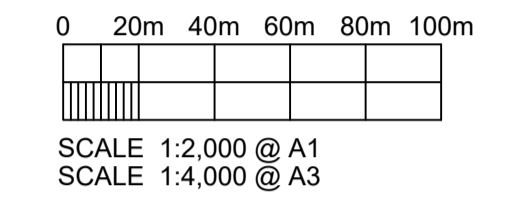
NOTE:
 + ALL SHOWN SERVICES ARE FROM ON SITE VISUAL INSPECTIONS AND EXISTING RECORDS ONLY. CONTRACTOR TO CONFIRM LOCATION AND DEPTH OF ALL INGROUND SERVICES PRIOR TO ANY EXCAVATION.

COPYRIGHT
 Kehoe Myers Consulting Engineers Pty. Ltd. Reserve the right to the design and documentation of the work contained on this drawing. This work is covered by Copyright and cannot be reproduced or copied in any form without the written permission of Kehoe Myers Consulting Engineers Pty. Ltd. Any license, expressed or implied, to the use of this document is restricted to the terms of agreement between the client and consulting engineer for professional services.



DRAWING ISSUE

ISSUE	DATE	DETAILS	INITIAL
P6	01.12.25	FOR APPROVAL	PJS
P7	12.02.26	FOR APPROVAL	PJS
P8	20.02.26	FOR APPROVAL	NJK
P9	09.04.26	FOR APPROVAL	PJS



PRELIMINARY
 NOT FOR CONSTRUCTION
 DATE 09.04.26 11:48 AM

PRINT IN COLOUR

Kehoe Myers
 CONSULTING ENGINEERS KEHOEMYERS.COM.AU
 PH +617 4632 8100

CIVIL | STRUCTURAL | HYDRAULIC

CLIENT
WIDELAND GROUP

PROJECT
**MACKENZIE STREET,
 MOUNT LOFTY - SUBDIVISION**

DRAWING TITLE
**STORMWATER CATCHMENT
 PLANS - DEVELOPED**

DESIGN	<i>KZ</i>	ORIGINAL SIZE	A1
DRAWN	<i>KZ</i>	PROJECT NUMBER	C2223180
CHECKED	<i>MS</i>	DRAWING NUMBER	DA05
APPROVED		ISSUE	P9

STORMWATER CATCHMENT PLANS - DEVELOPED

SCALE:- 1:2000 @ A1, 1:4000 @ A3