

PROPOSED EXTENSION TO THE TOOWOOMBA SPORTS CLUB



DEVELOPMENT SUMMARY

SITE INFORMATION

Lot 1 RP49868	TOOWOOMBA SPORTS CLUB
Lot 4 RP93677	
Lot 6 RP93677	
Lot 5 SP191223	CARPARK
Lot 8 RP5232	METROPOLE HOTEL

SITE AREAS

EXISTING: 2,954m²

- Lot 1 = 695m²
- Lot 4 = 328m²
- Lot 6 = 351m²
- Lot 5 = 1580m²

PROPOSED: 3,421m²

- Lot 1 = 695m²
- Lot 4 = 328m²
- Lot 6 = 351m²
- Lot 5 = 1580m²
- Lot 8 = 467m²

CAR PARKING

PROVIDED: 98 Spaces

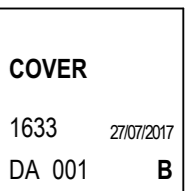
TOOWOOMBA REGIONAL COUNCIL

APPROVED PLAN

referred to in Council's Decision Notice dated
14 September 2017

This plan is subject to conditions of Approval Number
MCUI/2017/1525 & PSW/2017/1526

Assessment Manager



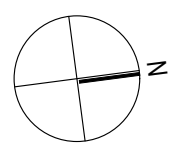


TOOWOOMBA REGIONAL COUNCIL
APPROVED PLAN
 referred to in Council's Decision Notice dated
 14 September 2017
 This plan is subject to conditions of Approval Number
 MCUI/2017/1525 & PSW/2017/1526

[Signature]
 Assessment Manager

1 CONTEXT PLAN
 1:1000

REV	DATE	DESCRIPTION
P1	14/02/17	PRELIM 1
P2	28/02/17	PRELIM 2
P3	22/03/17	UPDATED AREAS
A	24/07/17	COUNCIL IR
B	27/07/17	AMENDED COUNCIL IR



TOOWOOMBA SPORTS CLUB
SPORTS CLUB REFURBISHMENT
 350 Ruthven St
 Toowoomba, QLD



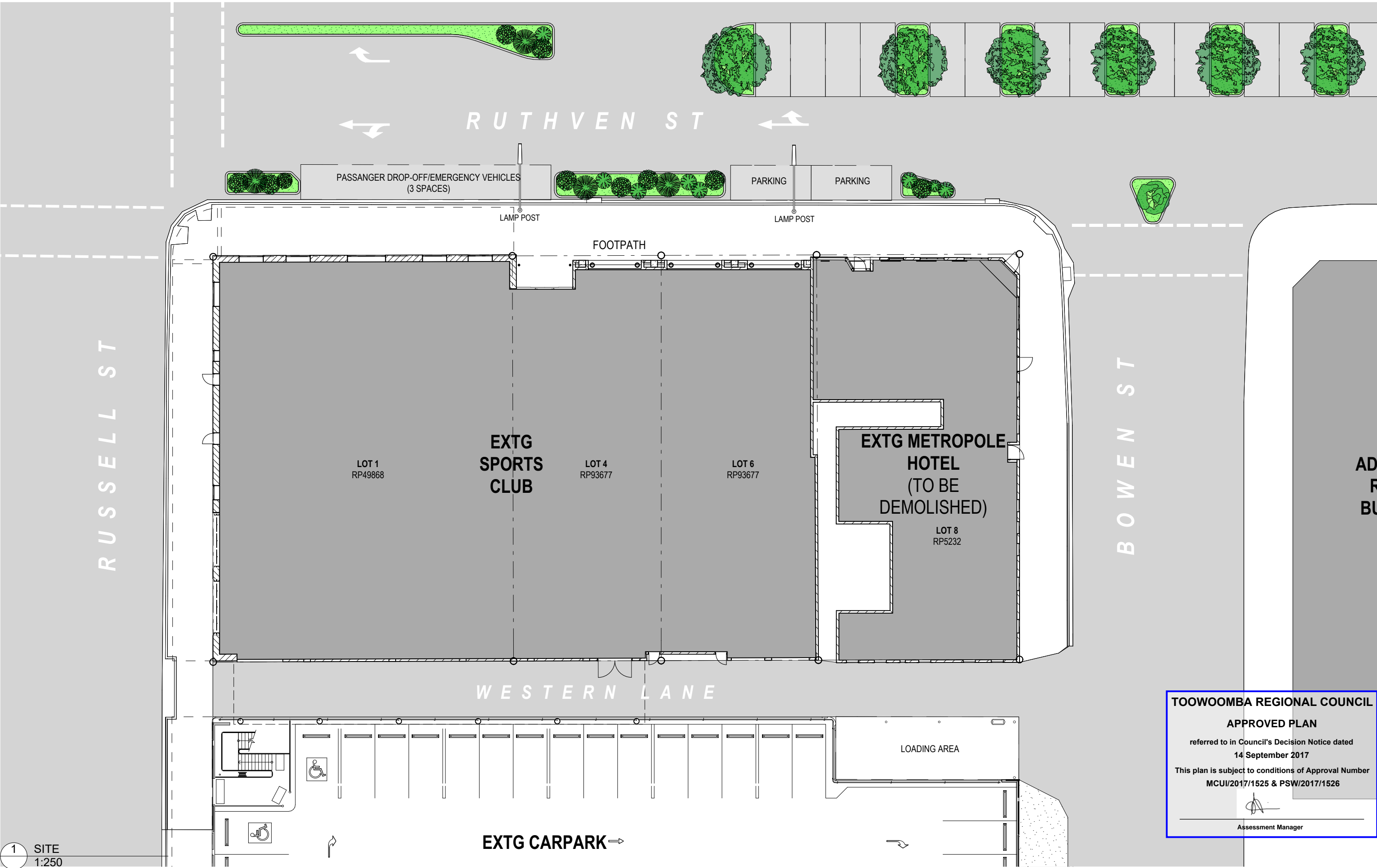
PO BOX 1491
 NEW FARM
 QLD 4005

P: 07 3172 0150
 www.ultralinea.com.au

Drawing:
SITE
CONTEXT PLAN
 Date:
 27/07/2017
 Proj. No:
 1633

Dwg. No:
 DA 101

Rev:
B

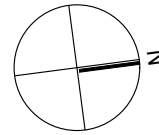


TOOWOOMBA REGIONAL COUNCIL
APPROVED PLAN
 referred to in Council's Decision Notice dated
 14 September 2017
 This plan is subject to conditions of Approval Number
 MCUI/2017/1525 & PSW/2017/1526

[Signature]
 Assessment Manager

1 SITE
 1:250

REV	DATE	DESCRIPTION
P1	14/02/17	PRELIM 1
P2	28/02/17	PRELIM 2
P3	22/03/17	UPDATED AREAS
A	24/07/17	COUNCIL IR
B	27/07/17	AMENDED COUNCIL IR



TOOWOOMBA SPORTS CLUB
SPORTS CLUB REFURBISHMENT
 350 Ruthven St
 Toowoomba, QLD



PO BOX 1491
 NEW FARM
 QLD 4005

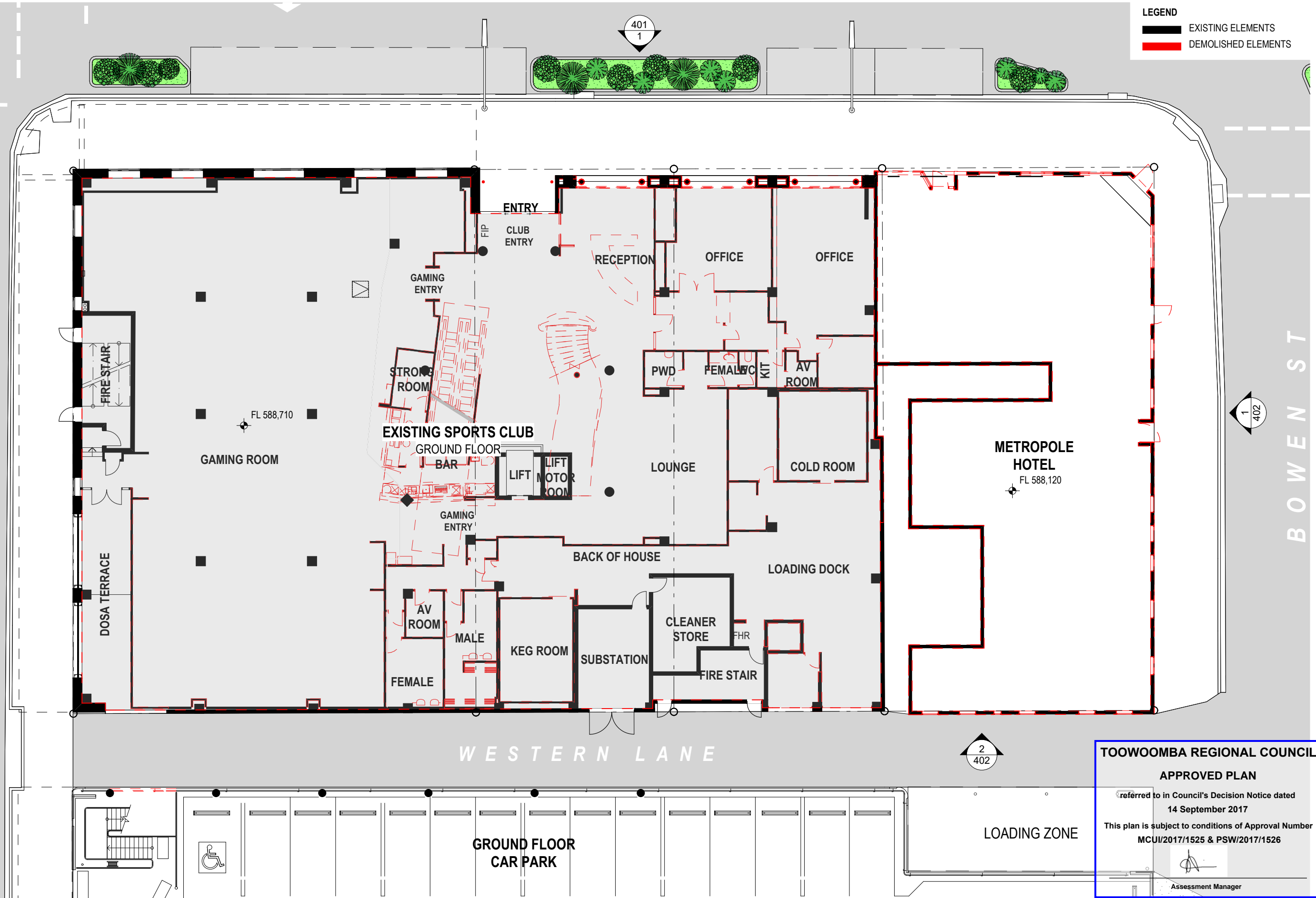
P: 07 3172 0150
 www.ultralinea.com.au

Drawing:
SITE
SITE PLAN
 Date:
 27/07/2017
 Proj. No:
 1633

Dwg. No:
 DA 102

Rev:
B

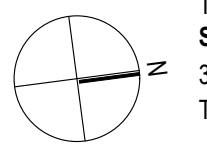
LEGEND
 ■ EXISTING ELEMENTS
 ■ DEMOLISHED ELEMENTS



1 GROUND FLOOR
 1:200

TOOWOOMBA REGIONAL COUNCIL
APPROVED PLAN
 referred to in Council's Decision Notice dated
 14 September 2017
 This plan is subject to conditions of Approval Number
 MCUI/2017/1525 & PSW/2017/1526
 Assessment Manager

REV	DATE	DESCRIPTION
P1	14/02/17	PRELIM 1
P2	28/02/17	PRELIM 2
P3	22/03/17	UPDATED AREAS
A	24/07/17	COUNCIL IR
B	27/07/17	AMENDED COUNCIL IR



TOOWOOMBA SPORTS CLUB
SPORTS CLUB REFURBISHMENT
 350 Ruthven St
 Toowoomba, QLD



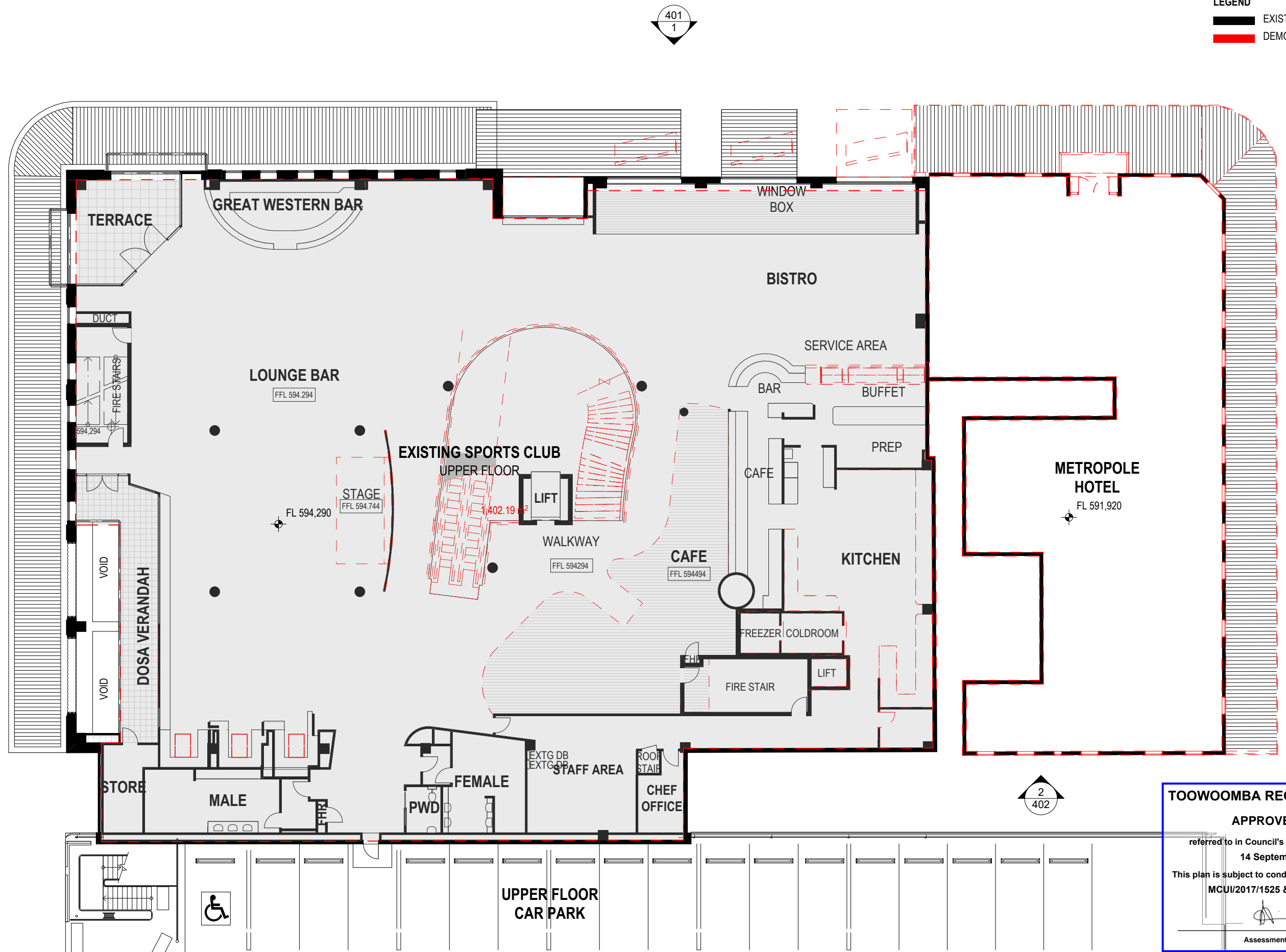
PO BOX 1491
 NEW FARM
 QLD 4005
 P: 07 3172 0150
 www.ultralinea.com.au

Drawing:
PLANS
GROUND FLOOR DEMO PLAN
 Date:
 27/07/2017
 Proj. No:
 1633
 Dwg. No:
 DA 201
 Rev:
B

N:\CURRENT\TSC Metropole 16335.0 CAD\TSC Metropole 1633 CONCEPT 6 - IR Response.pln

© Architect retains copyright. Do not copy any or all parts without permission.

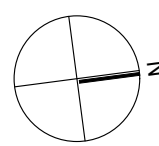
LEGEND
 — EXISTING ELEMENTS
 - - - DEMOLISHED ELEMENTS



1 UPPER FLOOR
 1:200

TOOWOOMBA REGIONAL COUNCIL
APPROVED PLAN
 referred to in Council's Decision Notice dated
 14 September 2017
 This plan is subject to conditions of Approval Number
 MCUI/2017/1525 & PSW/2017/1526
 Assessment Manager

REV	DATE	DESCRIPTION
P1	14/02/17	PRELIM 1
P2	28/02/17	PRELIM 2
P3	22/03/17	UPDATED AREAS
A	24/07/17	COUNCIL IR
B	27/07/17	AMENDED COUNCIL IR



TOOWOOMBA SPORTS CLUB
SPORTS CLUB REFURBISHMENT
 350 Ruthven St
 Toowoomba, QLD



PO BOX 1491
 NEW FARM
 QLD 4005
 P: 07 3172 0150
 www.ultralinea.com.au

Drawing:
PLANS
UPPER FLOOR DEMO PLAN
 Date:
 27/07/2017
 Proj. No:
 1633
 Dwg. No:
 DA 202
 Rev:
B

N:\CURRENT\TSC Metropole 16335.0 CAD\TSC Metropole 1633 CONCEPT 6 - IR Response.pln

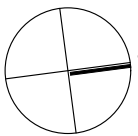
© Architect retains copyright. Do not copy any or all parts without permission.



TOOWOOMBA REGIONAL COUNCIL
APPROVED PLAN
 referred to in Council's Decision Notice dated
 14 September 2017
 This plan is subject to conditions of Approval Number
 MCUI/2017/1525 & PSW/2017/1526
 Assessment Manager

1 UPPER FLOOR
 1:200

REV	DATE	DESCRIPTION
P1	14/02/17	PRELIM 1
P2	28/02/17	PRELIM 2
P3	22/03/17	UPDATED AREAS
A	24/07/17	COUNCIL IR
B	27/07/17	AMENDED COUNCIL IR



TOOWOOMBA SPORTS CLUB
SPORTS CLUB REFURBISHMENT
 350 Ruthven St
 Toowoomba, QLD



PO BOX 1491
 NEW FARM
 QLD 4005
 P: 07 3172 0150
 www.ultralinea.com.au

Drawing:
PLANS
UPPER FLOOR PROPOSED
 Date:
 27/07/2017
 Proj. No:
 1633
 Dwg. No:
 DA 204
 Rev:
B

LEGEND

- CT CERAMIC TILE
- FB FACE BRICK
- FS1 FEATURE SCREEN 1
- FS2 FEATURE SCREEN 2
- GL CLEAR GLAZING
- MC METAL CLADDING

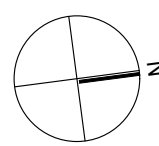


1 RUTHVEN STREET ELEVATION
1:200

TOOWOOMBA REGIONAL COUNCIL
APPROVED PLAN
referred to in Council's Decision Notice dated
14 September 2017
This plan is subject to conditions of Approval Number
MCUI/2017/1525 & PSW/2017/1526

Assessment Manager

REV	DATE	DESCRIPTION
P1	14/02/17	PRELIM 1
P2	28/02/17	PRELIM 2
P3	22/03/17	UPDATED AREAS
A	24/07/17	COUNCIL IR
B	27/07/17	AMENDED COUNCIL IR



TOOWOOMBA SPORTS CLUB
SPORTS CLUB REFURBISHMENT
350 Ruthven St
Toowoomba, QLD

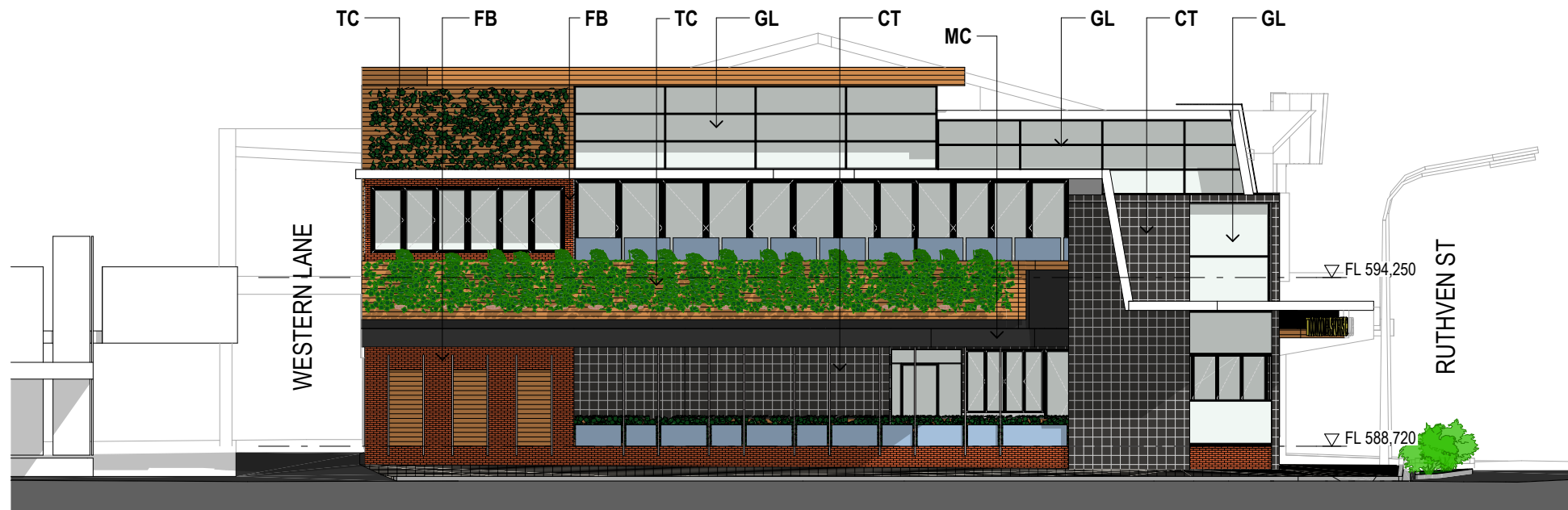


PO BOX 1491
NEW FARM
QLD 4005
P: 07 3172 0150
www.ultralinea.com.au

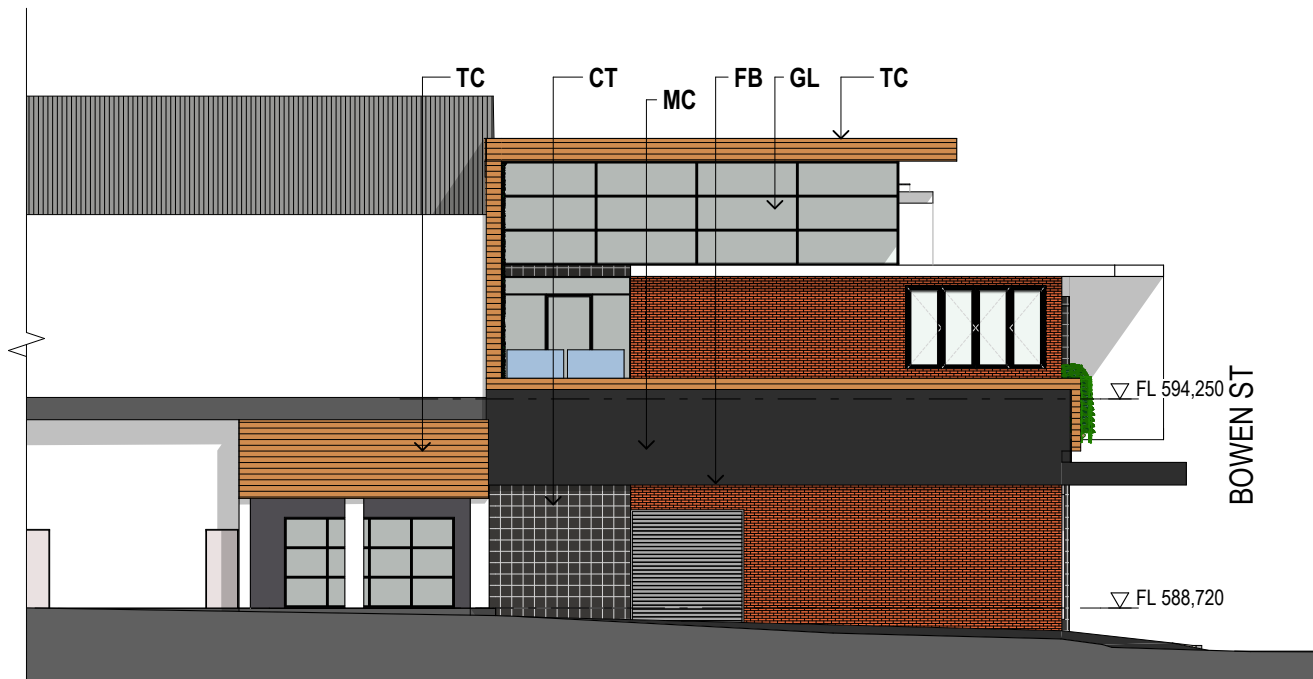
Drawing:
**ELEVATIONS
ELEVATIONS - PROPOSED**
Date:
27/07/2017
Proj. No:
1633
Dwg. No:
DA 403
Rev:
B

LEGEND


- CT CERAMIC TILE
- FB FACE BRICK
- FS1 FEATURE SCREEN 1
- FS2 FEATURE SCREEN 2
- GL CLEAR GLAZING
- MC METAL CLADDING



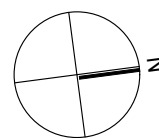
1 BOWEN STREET ELEVATION
1:200



2 WESTERN LANE ELEVATION
1:200

TOOWOOMBA REGIONAL COUNCIL
APPROVED PLAN
referred to in Council's Decision Notice dated
14 September 2017
This plan is subject to conditions of Approval Number
MCUI/2017/1525 & PSW/2017/1526

Assessment Manager

REV	DATE	DESCRIPTION
P1	14/02/17	PRELIM 1
P2	28/02/17	PRELIM 2
P3	22/03/17	UPDATED AREAS
A	24/07/17	COUNCIL IR
B	27/07/17	AMENDED COUNCIL IR



TOOWOOMBA SPORTS CLUB
SPORTS CLUB REFURBISHMENT
350 Ruthven St
Toowoomba, QLD



PO BOX 1491
NEW FARM
QLD 4005
P: 07 3172 0150
www.ultralinea.com.au

Drawing:
ELEVATIONS
ELEVATIONS - PROPOSED
Date:
27/07/2017
Proj. No:
1633
Dwg. No:
DA 404
Rev:
B



1 PROPOSED SPORTS CLUB EXTENSION



3 RUTHVEN STREET ASPECT



2 BOWEN STREET ASPECT




4 RUTHVEN ST INTERFACE

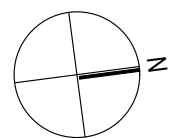


5 BOWEN ST OUTDOOR DINING

TOOWOOMBA REGIONAL COUNCIL
APPROVED PLAN
 referred to in Council's Decision Notice dated
14 September 2017
 This plan is subject to conditions of Approval Number
MCUI/2017/1525 & PSW/2017/1526


 Assessment Manager

REV	DATE	DESCRIPTION
P1	14/02/17	PRELIM 1
P2	28/02/17	PRELIM 2
P3	22/03/17	UPDATED AREAS
A	24/07/17	COUNCIL IR
B	27/07/17	AMENDED COUNCIL IR



TOOWOOMBA SPORTS CLUB
SPORTS CLUB REFURBISHMENT
 350 Ruthven St
 Toowoomba, QLD



PO BOX 1491
 NEW FARM
 QLD 4005

P: 07 3172 0150
 www.ultralinea.com.au

Drawing:
**PERSPECTIVES
 STREET VIEWS 1**
 Date:
 27/07/2017
 Proj. No:
 1633

Dwg. No:
 DA 501

Rev:
B

© Architect retains copyright. Do not copy any or all parts without permission.