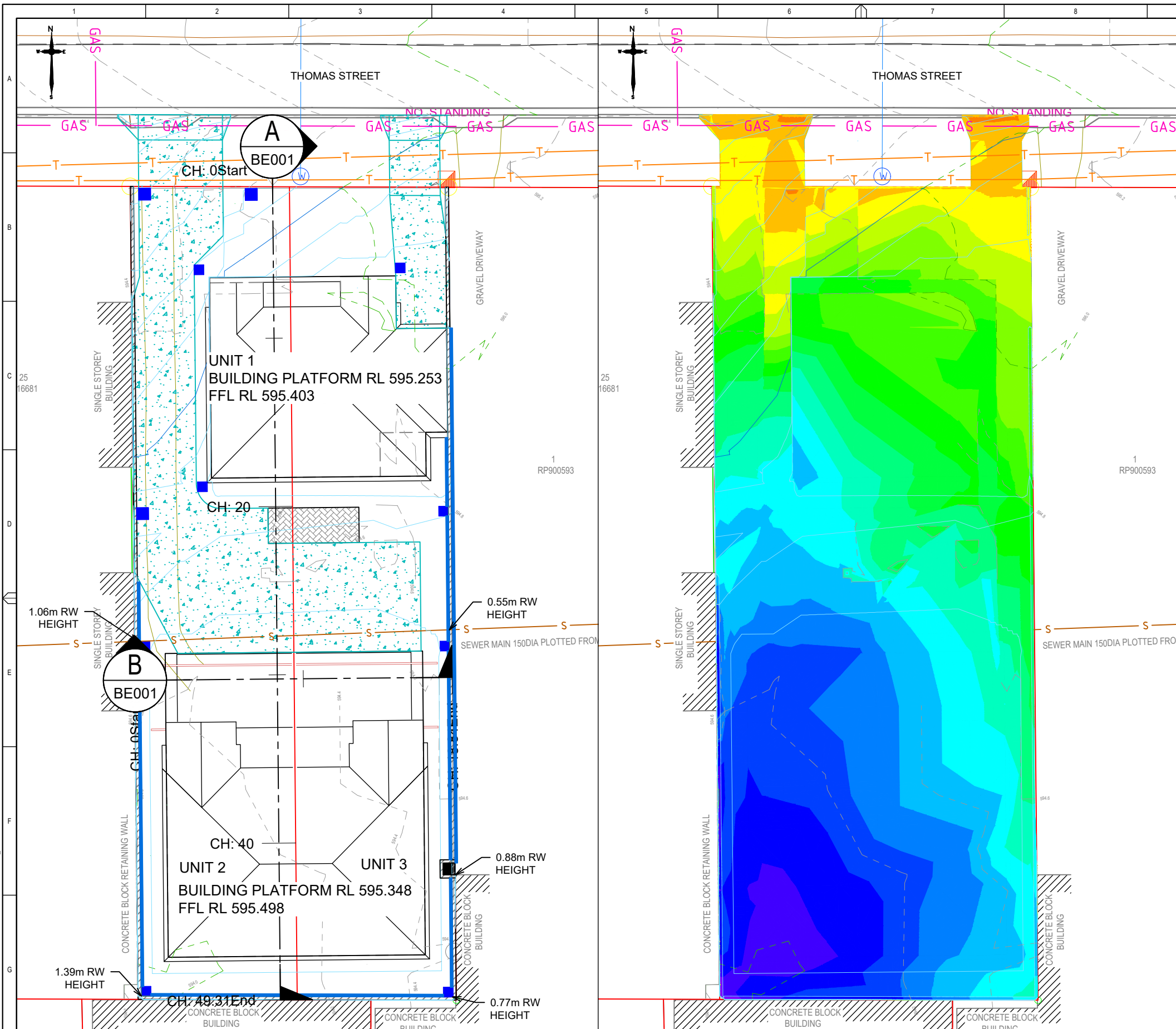


Appendix D:
Earthworks and stormwater drainage design
drawings



SITE DESIGN CONTOUR PLAN
SCALE 1:250

BULK EARTHWORKS DEPTH PLAN
SCALE 1:250

DTM SURFACE COMPARISON VOLUMES (m³)			
DESCRIPTION	CUT	FILL	BALANCE
DESIGN FINISHED SURFACE	1.01	-692.51	-691.50

CUT & FILL AREAS (m²)			
DESCRIPTION	CUT AREA	FILL AREA	TOTAL AREA
DESIGN FINISHED SURFACE	36.68	911.49	948.17

CUT & FILL DEPTH RANGE	COLOUR
-0.20 to -0.10	Orange
-0.10 to 0.00	Yellow
0.00 to 0.10	Light Green
0.10 to 0.20	Green
0.20 to 0.30	Light Blue
0.30 to 0.40	Blue
0.40 to 0.50	Light Cyan
0.50 to 0.60	Cyan
0.60 to 0.70	Light Blue
0.70 to 0.80	Blue
0.80 to 0.90	Light Blue
0.90 to 1.00	Blue
1.00 to 1.10	Light Blue
1.10 to 1.20	Blue
1.20 to 1.30	Light Blue
1.30 to 1.40	Blue
1.40 to 1.50	Light Blue

NOTES

- BULK EARTHWORKS AREAS AND VOLUMES IN ABOVE TABLES ARE BASE ON AVAILABLE SURVEY INFORMATION AND ARE RELIMINARY. FINAL AREAS AND VOLUMES TO BE DETERMINED DURING DETAILED DESIGN.

LEGEND

- PROPOSED STORMWATER INLET PIT
- PROPOSED GRATED TRENCH CHANNEL
- - - PRE-DEVELOPMENT MAJOR CONTOUR (1.00m)
- - - PRE-DEVELOPMENT MINOR CONTOUR (0.2m)
- PROPOSED DESIGN MAJOR CONTOUR (1.00m)
- - - PROPOSED DESIGN MINOR CONTOUR (0.10m)
- PROPOSED RETAINING WALL
- PROPOSED CONCRETE DRIVEWAY
- PROPERTY BOUNDARY
- EXISTING GRAVITY SEWER
- EXISTING UNDERGROUND COMMS. CABLE
- EXISTING UNDERGROUND GAS PIPE

PRINT IN COLOUR

FOR APPROVAL

No	Revision	Note	Drawn	Checked	Approved	Date
A		ISSUE FOR DA APPROVAL	RV	RV	RV	28/05/26

© Vosloo Consulting Engineers Pty Ltd All Rights Reserved 2026
Copyright in part or in full of any information or content on this drawings belongs to Vosloo Consulting Engineers Pty Ltd and must not be used, sold, transferred, copied or reproduced in whole or in part in any manner or form without the written approval from this company.



WATER SUPPLY
WASTEWATER
ROADWORKS
STORMWATER
LAND DEVELOPMENT

PO Box 7122, South Toowoomba QLD 4350
P: 0449 219 555
W: www.VoslooConsultingEngineers.com.au

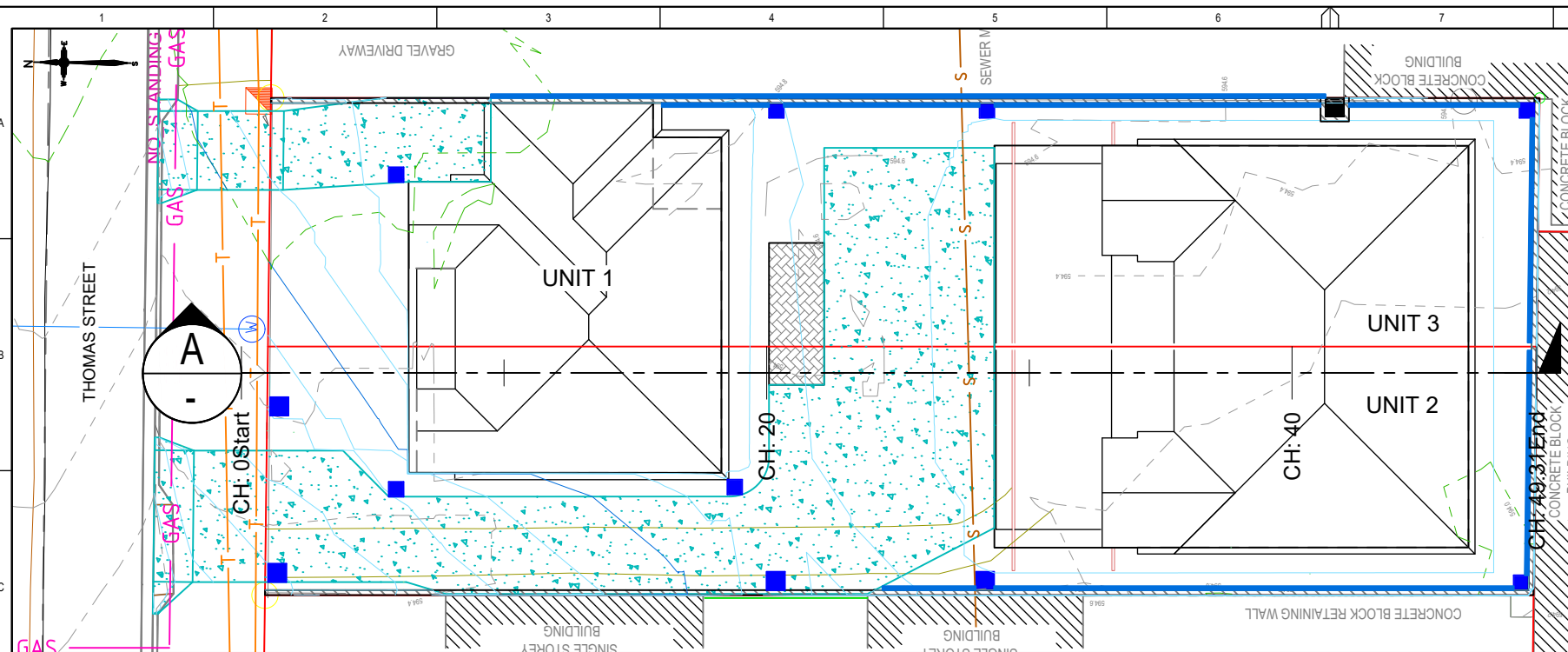
RPEQ Name	R. VOSLOO	Drawn	R. VOSLOO	Designer	R. VOSLOO
RPEQ No.	13175	Drafting Check	R. VOSLOO	Design Check	R. VOSLOO
DATE	27/05/2026	Scale	0 2.5 5.0 7.5m		
Signature		SCALE 1:250 AT ORIGINAL SIZE			

LOCATION:
4 THOMAS ST,
TOOWOOMBA CITY, QLD
4350

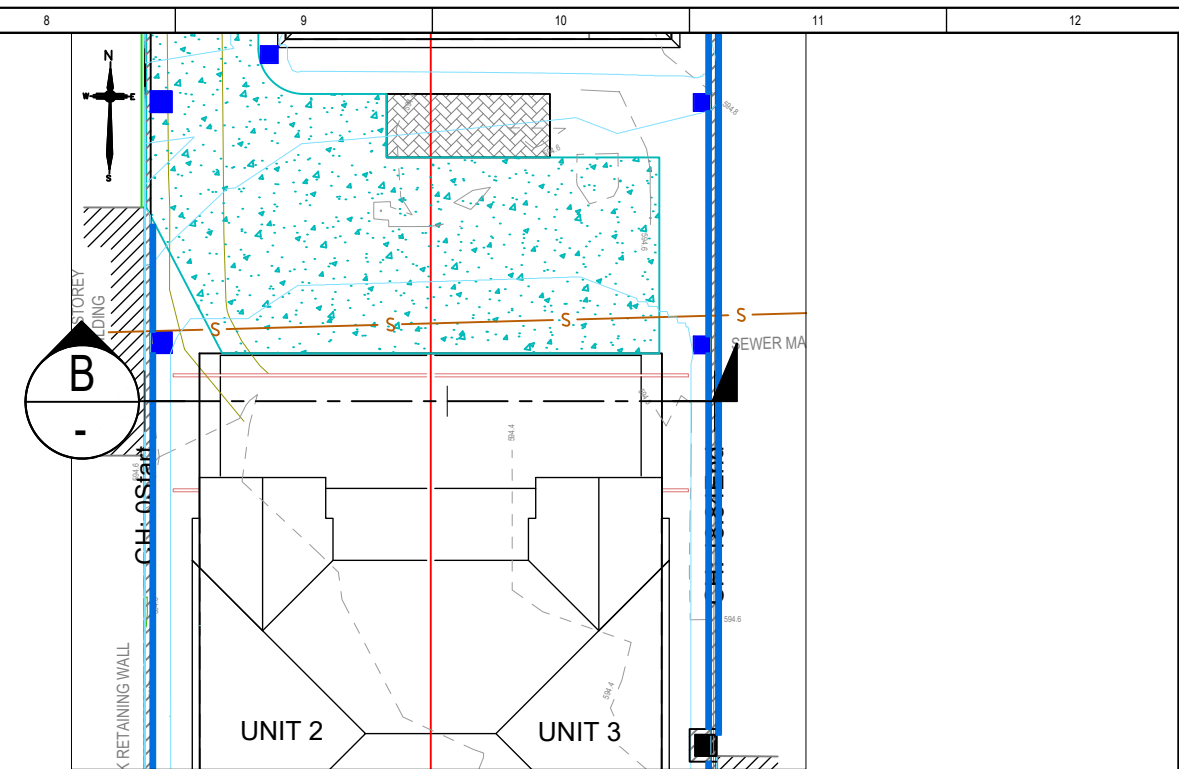
RP DESCRIPTION:
LOTS 23 & 24 RP16681
TRC DA REF. NO.:

Client	ZHONGYU LIU & YANG ZHOU	
Project	4 THOMAS STREET, TOOWOOMBA CITY	
Title	3 RESIDENTIAL UNITS BULK EARTHWORKS VOLUMES PLAN	
Original Size	Drawing No:	2507-04-BE001
		Rev: A

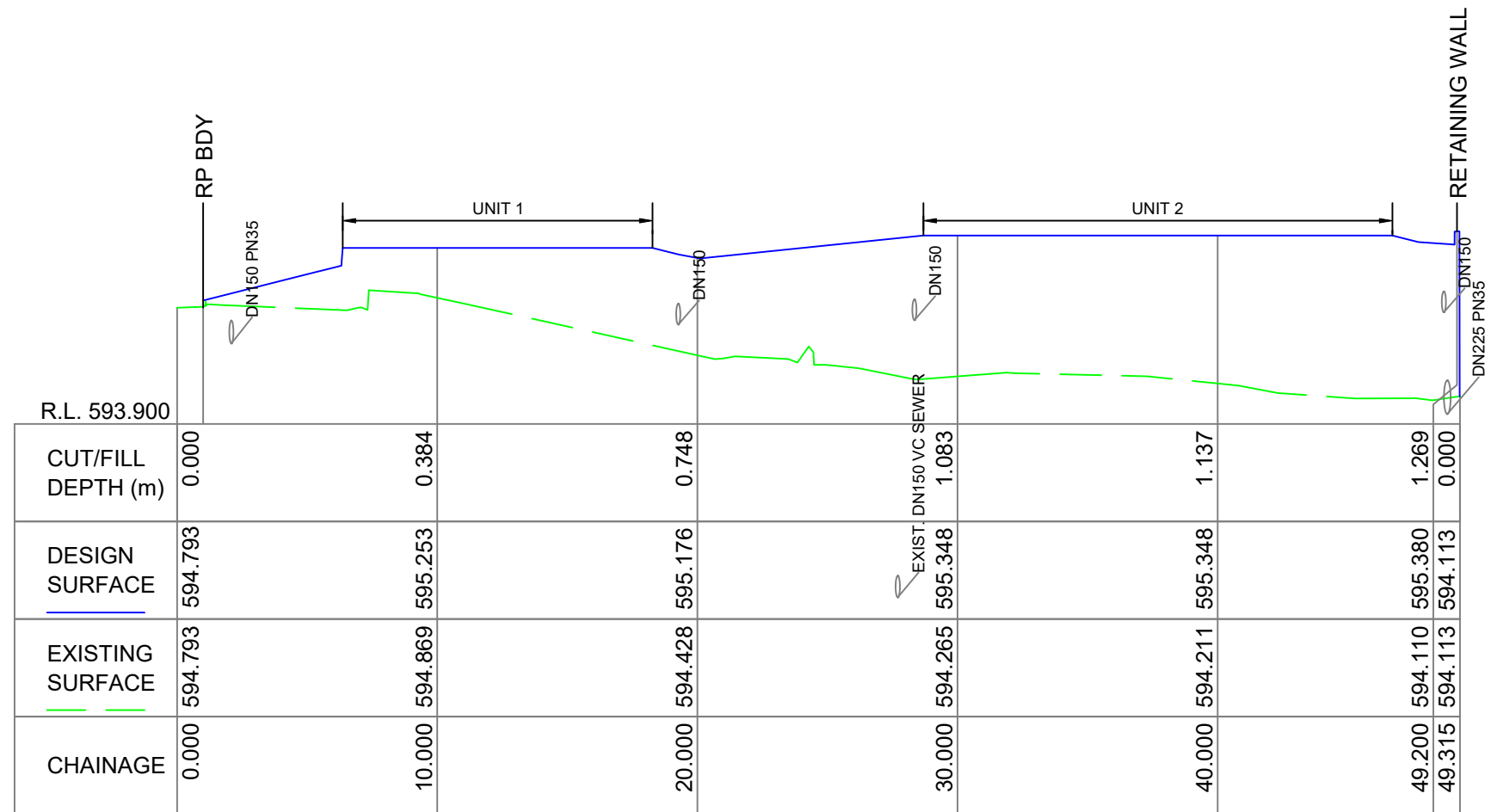
Wed, 27 May 2026 - 12:28pm D:\VICE TEAM FOLDER\PROJECTS\2025\2507-04\DRAWINGS\FOR APPROVAL\2507-04_REV A.DWG tonal



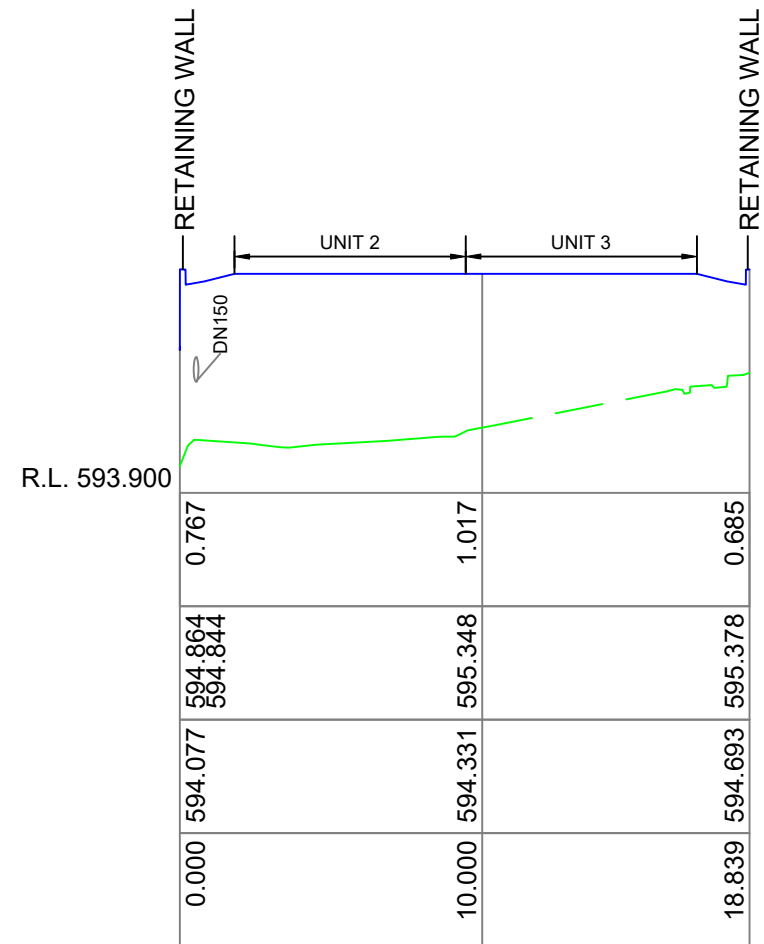
EARTHWORKS SECTION A PLAN
SCALE 1:250



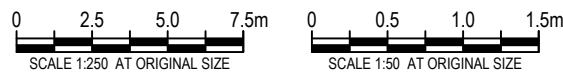
EARTHWORKS SECTION B PLAN
SCALE 1:250



EARTHWORKS SECTION A Ch 0.000 to Ch 49.315
SCALES: HORIZONTAL 1:250 VERTICAL 1:50



EARTHWORKS SECTION B Ch 0.000 to Ch 18.839
SCALES: HORIZONTAL 1:250 VERTICAL 1:50



PRINT IN COLOUR

FOR APPROVAL

No	Revision	Note	Drawn	Checked	Approved	Date
A	ISSUE FOR DA APPROVAL		RV	RV	RV	28/05/26

© Vosloo Consulting Engineers Pty Ltd All Rights Reserved 2026
 Copyright in part or in full of any information or content on this drawings belongs to Vosloo Consulting Engineers Pty Ltd and must not be used, sold, transferred, copied or reproduced in whole or in part in any manner or form without the written approval from this company.



- WATER SUPPLY
 - WASTEWATER
 - ROADWORKS
 - STORMWATER
 - LAND DEVELOPMENT
- PO Box 7122, South Toowoomba QLD 4350
 P: 0449 219 555
 W: www.VoslooConsultingEngineers.com.au

RPEQ Name	R. VOSLOO	Drawn	R. VOSLOO	Designer	R. VOSLOO
RPEQ No.	13175	Drafting Check	R. VOSLOO	Design Check	R. VOSLOO
DATE	27/05/2026	Scale	AS SHOWN		
Signature					

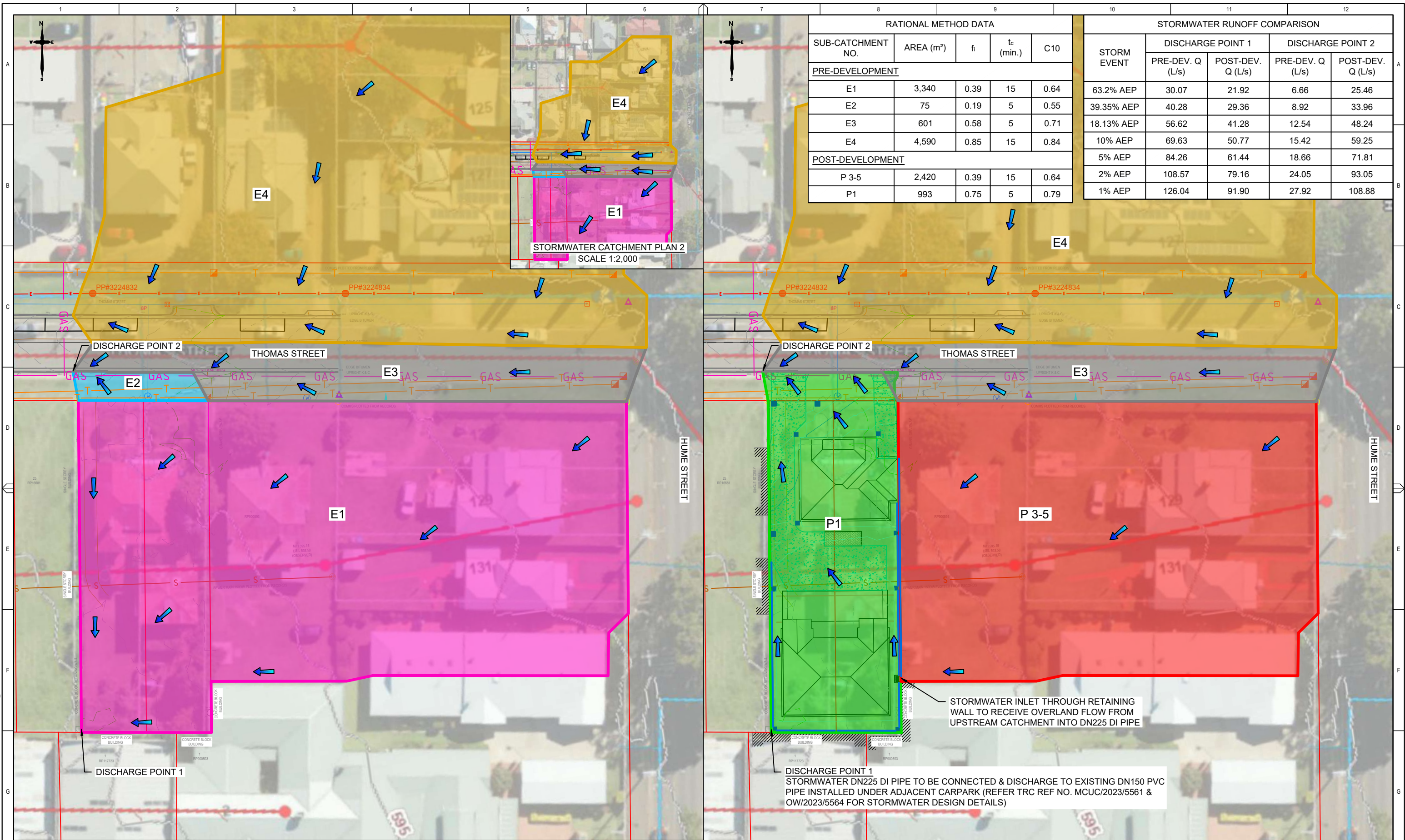
LOCATION:
 4 THOMAS ST,
 TOOWOOMBA CITY, QLD
 4350

RP DESCRIPTION:
 LOTS 23 & 24 RP16681

TRC DA REF. NO.:

Client Project	ZHONGYU LIU & YANG ZHOU 4 THOMAS STREET, TOOWOOMBA CITY
Title	3 RESIDENTIAL UNITS BULK EARTHWORKS SECTIONS
Original Size	A3
Drawing No.	2507-04-BE002
Rev:	A

Wed, 27 May 2026 - 1:45pm D:\VICE TEAM FOLDER\PROJECTS\2507-04\DRAWINGS\FOR APPROVAL\2507-04_REV A1.DWG tonal



RATIONAL METHOD DATA				
SUB-CATCHMENT NO.	AREA (m ²)	f _i	t _c (min.)	C10
PRE-DEVELOPMENT				
E1	3,340	0.39	15	0.64
E2	75	0.19	5	0.55
E3	601	0.58	5	0.71
E4	4,590	0.85	15	0.84
POST-DEVELOPMENT				
P 3-5	2,420	0.39	15	0.64
P1	993	0.75	5	0.79

STORM EVENT	DISCHARGE POINT 1		DISCHARGE POINT 2	
	PRE-DEV. Q (L/s)	POST-DEV. Q (L/s)	PRE-DEV. Q (L/s)	POST-DEV. Q (L/s)
63.2% AEP	30.07	21.92	6.66	25.46
39.35% AEP	40.28	29.36	8.92	33.96
18.13% AEP	56.62	41.28	12.54	48.24
10% AEP	69.63	50.77	15.42	59.25
5% AEP	84.26	61.44	18.66	71.81
2% AEP	108.57	79.16	24.05	93.05
1% AEP	126.04	91.90	27.92	108.88

PRE-DEVELOPMENT STORMWATER CATCHMENT PLAN
SCALE 1:500

POST-DEVELOPMENT STORMWATER CATCHMENT PLAN
SCALE 1:500

PRINT IN COLOUR FOR APPROVAL

No	Revision	Note	Drawn	Checked	Approved	Date
A		ISSUE FOR DA APPROVAL	RV	RV	RV	28/05/26

© Vosloo Consulting Engineers Pty Ltd All Rights Reserved 2026
Copyright in part or in full of any information or content on this drawings belongs to Vosloo Consulting Engineers Pty Ltd and must not be used, sold, transferred, copied or reproduced in whole or in part in any manner or form without the written approval from this company.



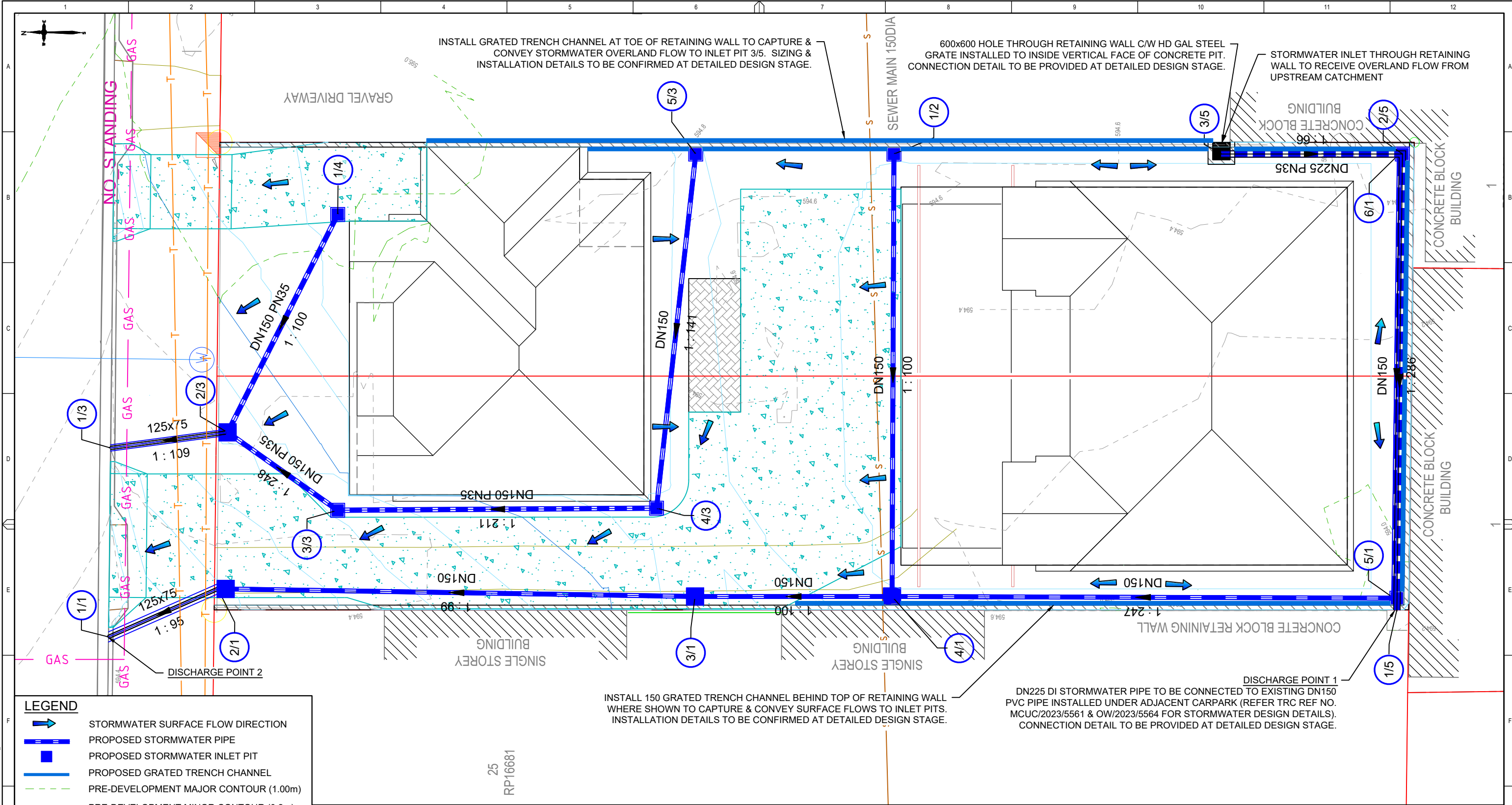
WATER SUPPLY
 WASTEWATER
 ROADWORKS
 STORMWATER
 LAND DEVELOPMENT
 PO Box 7122, South Toowoomba QLD 4350
 P: 0449 219 555
 W: www.VoslooConsultingEngineers.com.au

RPEQ Name	R. VOSLOO	Drawn	R. VOSLOO	Designer	R. VOSLOO
RPEQ No.	13175	Drafting Check	R. VOSLOO	Design Check	R. VOSLOO
DATE	27/05/2026	Scale	0 5 10 15m		
Signature		SCALE 1:500 AT ORIGINAL SIZE			

LOCATION:
 4 THOMAS ST,
 TOOWOOMBA CITY, QLD
 4350
RP DESCRIPTION:
 LOTS 23 & 24 RP16681
TRC DA REF. NO.:

Client	ZHONGYU LIU & YANG ZHOU
Project	4 THOMAS STREET, TOOWOOMBA CITY
Title	3 RESIDENTIAL UNITS STORMWATER CATCHMENT PLAN
Original Size	A3
Drawing No.	2507-04-D001
Rev:	A

Wed, 27 May 2026 - 1:45pm D:\VICE TEAM FOLDER\PROJECTS\2507-04\DRAWINGS\FOR APPROVAL\2507-04_REV A1.DWG tonal



LEGEND

- STORMWATER SURFACE FLOW DIRECTION
- PROPOSED STORMWATER PIPE
- PROPOSED STORMWATER INLET PIT
- PROPOSED GRATED TRENCH CHANNEL
- PRE-DEVELOPMENT MAJOR CONTOUR (1.00m)
- PRE-DEVELOPMENT MINOR CONTOUR (0.2m)
- PROPOSED DESIGN MAJOR CONTOUR (1.00m)
- PROPOSED DESIGN MINOR CONTOUR (0.10m)
- PROPOSED RETAINING WALL
- PROPOSED CONCRETE DRIVEWAY
- PROPERTY BOUNDARY
- EXISTING GRAVITY SEWER
- EXISTING UNDERGROUND COMMS. CABLE
- EXISTING UNDERGROUND GAS PIPE

NOTES

- ALL RETAINING WALLS ALONG PROPERTY BOUNDARY TO BE CONSTRUCTED SUCH THAT THE TOP OF WALL TO BE 100mm HIGHER THAN THE ADJACENT FINISHED SURFACE LEVEL TO ENSURE STORMWATER SURFACE FLOWS DO NOT OVERTOP RETAINING WALLS.

STORMWATER LAYOUT PLAN
SCALE 1:150

No	Revision	Note	Drawn	Checked	Approved	Date
A	ISSUE FOR DA APPROVAL		RV	RV	RV	28/05/26

© Vosloo Consulting Engineers Pty Ltd All Rights Reserved 2026
Copyright in part or in full of any information or content on this drawings belongs to Vosloo Consulting Engineers Pty Ltd and must not be used, sold, transferred, copied or reproduced in whole or in part in any manner or form without the written approval from this company.



WATER SUPPLY
WASTEWATER
ROADWORKS
STORMWATER
LAND DEVELOPMENT

PO Box 7122, South Toowoomba QLD 4350
P: 0449 219 555
W: www.VoslooConsultingEngineers.com.au

RPEQ Name	R. VOSLOO	Drawn	R. VOSLOO	Designer	R. VOSLOO
RPEQ No.	13175	Drafting Check	R. VOSLOO	Design Check	R. VOSLOO
DATE	27/05/2026	Scale	0 1.5 3.0 4.5m		
Signature		SCALE 1:150 AT ORIGINAL SIZE			

LOCATION:
4 THOMAS ST,
TOOWOOMBA CITY, QLD
4350

RP DESCRIPTION:
LOTS 23 & 24 RP16681

TRC DA REF. NO.:

Client **ZHONGYU LIU & YANG ZHOU**
Project **4 THOMAS STREET, TOOWOOMBA CITY**
Title **3 RESIDENTIAL UNITS STORMWATER LAYOUT PLAN**

Original Size **A3** Drawing No: **2507-04-D002** Rev: **A**

PRINT IN COLOUR
FOR APPROVAL

Wed, 27 May 2026 - 12:26pm D:\VICE TEAM FOLDER\PROJECTS\2025\2507-04\DRAWINGS\FOR APPROVAL\2507-04_REV A.DWG tonal