

LEGEND

	PROPERTY BOUNDARY
	CADASTRAL BOUNDARY
	CONTOUR EXISTING (5.0m INTERVAL)
	MAPPED STREAM ORDER
	REGULATED VEGETATION – CAT B
	MANURE REUSE AREA (139.3 HA)
	EFFLUENT REUSE AREA (37.1 HA)
	FEEDLOT INFRASTRUCTURE

- NOTES:**
- CADASTRAL BOUNDARIES, REGULATED VEGETATION & WATERCOURSE DATA LAYERS HAVE BEEN SOURCED FROM QSPATIAL. DATA EXTRACTED 16/06/2023.
 - EXISTING CONTOUR DATA OBTAINED FROM THE ELVIS PLATFORM OF PUBLICLY AVAILABLE LIDAR.
 - FEATURES MAY HAVE BEEN DIGITISED FROM PLANS OR AERIAL PHOTOGRAPHS AND ACCURACY IS LIMITED.
 - EFFLUENT RUNOFF
 - ALL RUNOFF FROM THE CONVENTIONAL PRODUCTION, CATTLE HANDLING, ARRIVALS & DISPATCH PENS AND THE MANURE PAD IS TO BE MANAGED IN THE SEDIMENT BASIN AND EFFLUENT HOLDING POND.
 - THE REQUIRED SEDIMENTATION BASIN & DETENTION POND CAPACITIES HAVE BEEN DETERMINED IN ACCORDANCE WITH THE QLD DAF FEEDLOT GUIDELINES. THE INPUT DATA USED FOR THE SPREADSHEET CALCULATIONS IS CONSISTENT WITH THE CATCHMENT DETAILS PROVIDED IN P205.1 & P205.2 – CATCHMENT PLAN (ELC-002).

- SITE EXPANSION:**
- STAGE 1: 2,280 SCU (2 ROWS)
 - STOCKING DENSITY OF 13.0m²/SCU
 - EXPANSION OF FEED STORAGE
 - STAGE 2: 1,140 SCU (1 ROW)
 - STOCKING DENSITY OF 13.0m²/SCU

TOOWOOMBA REGIONAL COUNCIL

APPROVED PLAN

referred to in Council's Decision Notice dated
28 April 2026

This plan is subject to conditions of Approval Number
MCUI/2025/4656



Assessment Manager

CLIENT
EDWARDS LIVESTOCK COMPANY PTY LTD

PROJECT
SILVERBROOK FEEDLOT

LOCATION
2 SCHULLS ROAD, DEVON PARK QLD 4401

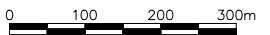
SHEET TITLE
PROPERTY PLAN



AgDSA
AGRICULTURAL DEVELOPMENT
SERVICES AUSTRALIA

PO BOX 292
TOOWOOMBA QLD 4350
PH: +61 473 171 957
E: contact@agdsa.com.au

SCALE



SCALE 1:5,000 (A1) 1:10,000 (A3)

EDWARDS LIVESTOCK
COMPANY PTY LTD

DESIGNED
TJS

CHECKED
MRN

PROJECT MANAGER
MRN

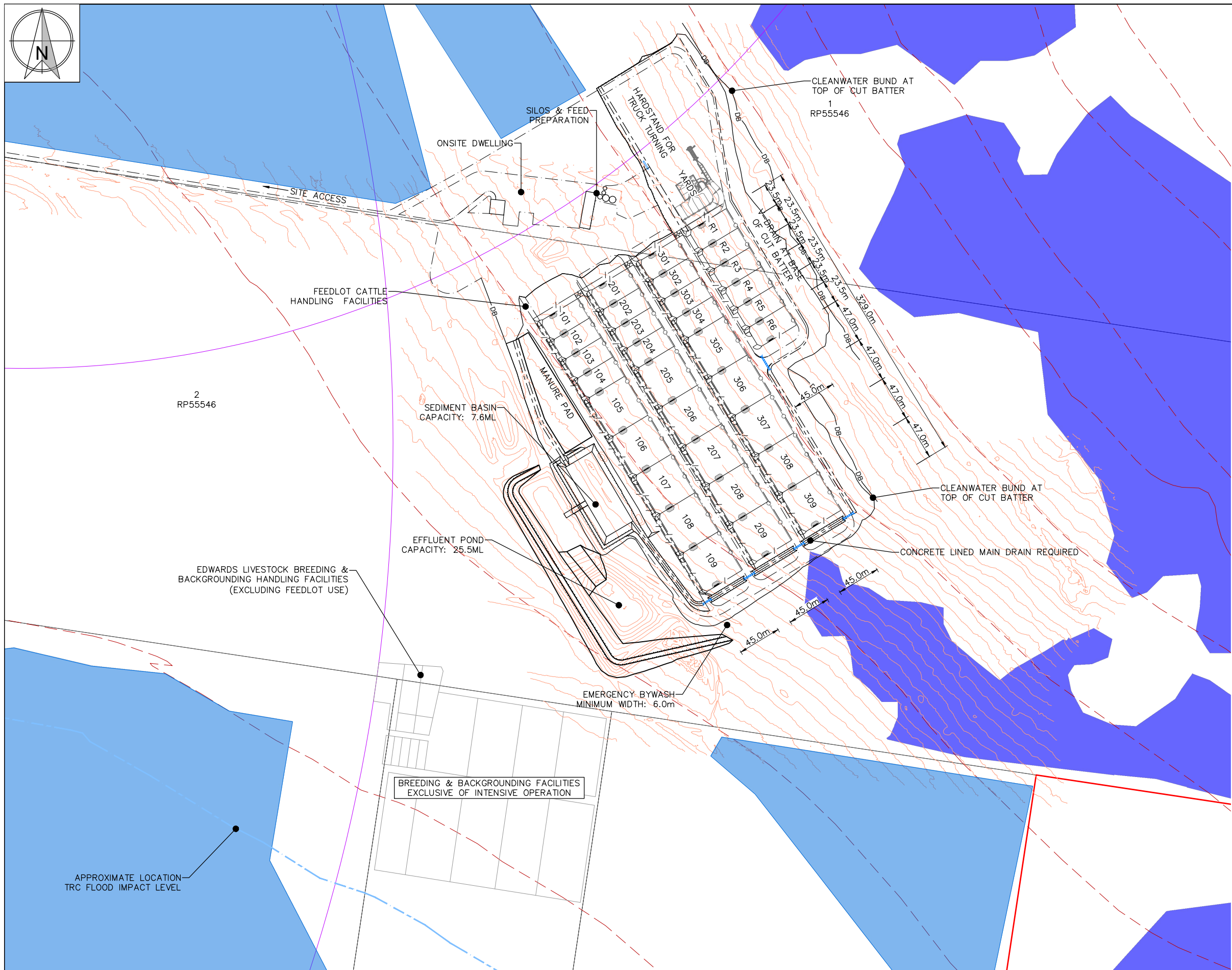
FOR APPROVAL ONLY

DATE	REV	DESCRIPTION	MRN	APP
5/12/2025	A1	ORIGINAL ISSUE FOR APPROVAL ONLY		
REVISIONS				

JOB CODE
ELC-002

SHEET NUMBER
P202

CURRENT REVISION
A1



LEGEND

- CADASTRAL BOUNDARY
- CONTOUR EXISTING (5.0m INTERVAL)
- TRC FLOOD LEVEL (APPROXIMATE)
- REGULATED VEGETATION – CAT B
- PEN FENCE
- CATTLE LANE
- FEED BUNK
- EFFLUENT DRAIN
- FEED ROAD
- CLEAN WATER DIVERSION BANK

NOTES:

1. CADASTRAL BOUNDARIES, REGULATED VEGETATION & WATERCOURSE DATA LAYERS HAVE BEEN SOURCED FROM QSPATIAL. DATA EXTRACTED 16/06/2023.
2. EXISTING CONTOUR DATA OBTAINED FROM THE ELVIS PLATFORM OF PUBLICLY AVAILABLE LIDAR.
3. FEATURES MAY HAVE BEEN DIGITISED FROM PLANS OR AERIAL PHOTOGRAPHS AND ACCURACY IS LIMITED.
4. THE REQUIRED SEDIMENTATION BASIN & DETENTION POND CAPACITIES HAVE BEEN DETERMINED IN ACCORDANCE WITH THE QLD DAF FEEDLOT GUIDELINES. THE INPUT DATA USED FOR THE SPREADSHEET CALCULATIONS IS CONSISTENT WITH THE CATCHMENT DETAILS PROVIDED IN DRAWING ELC-002/P205 – CATCHMENT PLAN.

DESIGN-GENERAL:

1. FEED ROAD WIDTH = 7.0m
2. CATTLE LANE/DRAIN WIDTH = 5.0m
3. FEED BUNK WIDTH = 1.0m

DESIGN-PRODUCTION:

1. STOCKING DENSITY = 13.0 m²/SCU
2. BUNK SPACE = 288 mm/SCU
3. PEN SIZING
 - 3.1. WIDTH = 47.0m
 - 3.2. DEPTH = 45.0m
 - 3.3. DIMENSION 47.0x45.0m = 2,115 m²/PEN
 - 3.4. CAPACITY = 163 SCU
4. PROPOSED PENS = 21
5. TOTAL CAPACITY = 3,400 SCU

DESIGN-HANDLING*:

1. STOCKING DENSITY = 13.0 m²/SCU
2. BUNK SPACE = 288 mm/SCU
3. PEN SIZING
 - 3.1. WIDTH = 23.5m
 - 3.2. DEPTH = 45.0m
 - 3.3. DIMENSION 23.5x45.0m = 1,058 m²/PEN
 - 3.4. CAPACITY = 81 SCU
4. PROPOSED PENS = 6
5. TOTAL CAPACITY = 486 SCU

* HANDLING PEN CAPACITY IS EXCLUDED FROM THE LICENSED CAPACITY (3,400 SCU) AS THE TOTAL CAPACITY WILL BE BALANCED ACROSS BOTH PRODUCTION & HANDLING PENS.

TOOWOOMBA REGIONAL COUNCIL

APPROVED PLAN

referred to in Council's Decision Notice dated
28 April 2026

This plan is subject to conditions of Approval Number
MCUI/2025/4656

Assessment Manager

CLIENT
EDWARDS LIVESTOCK COMPANY PTY LTD

PROJECT
SILVERBROOK FEEDLOT

LOCATION
2 SCHULLS ROAD, DEVON PARK QLD 4401

SHEET TITLE
DESIGN PLAN

AGRICULTURAL DEVELOPMENT
SERVICES AUSTRALIA

PO BOX 292
TOOWOOMBA QLD 4350
PH: +61 473 171 957
E: contact@agdsa.com.au

SCALE

SCALE 1:2,000 (A1) 1:4,000 (A3)

EDWARDS LIVESTOCK
COMPANY PTY LTD

DESIGNED TJS	FOR APPROVAL ONLY			JOB CODE ELC-002
CHECKED MRN				SHEET NUMBER P204
PROJECT MANAGER MRN	5/12/2025	A1	ORIGINAL ISSUE FOR APPROVAL ONLY	CURRENT REVISION A1
	DATE	REV	DESCRIPTION	REVISIONS



LEGEND

- CATCHMENT BOUNDARY
- MAXIMUM DRAIN LENGTH = 635m
- CLEAN WATER DIVERSION BANK
- PEN FENCE
- CATTLE LANE
- FEED BUNK
- EFFLUENT DRAIN
- FEED ROAD

NOTES

1. CATCHMENT BOUNDARIES HAVE BEEN DETERMINED USING THE SURVEY OBTAINED BY MINSTAFF IN AUGUST 2024.
2. FEATURES MAY HAVE BEEN DIGITISED FROM PLANS OR AERIAL PHOTOGRAPHS AND ACCURACY IS LIMITED.
3. THE REQUIRED SEDIMENT BASIN AND EFFLUENT HOLDING POND CAPACITIES HAVE BEEN DETERMINED IN ACCORDANCE WITH THE QLD DAF FEEDLOT GUIDELINES. THE INPUT DATA USED FOR THE SPREADSHEET CALCULATIONS IS CONSISTENT WITH THE CATCHMENT DETAILS PROVIDED IN THIS DRAWING AND THE EFFLUENT REUSE AREAS OUTLINED IN P201.

CONTROLLED DRAINAGE AREA		
DESCRIPTION	LEGEND	AREA (ha)
PRODUCTION PEN		4.43
HANDLING		0.63
SOFT		0.00
HARD		7.02
MANURE PAD		0.33
SEDIMENT BASIN		0.42
HOLDING POND		1.22
TOTAL		14.05

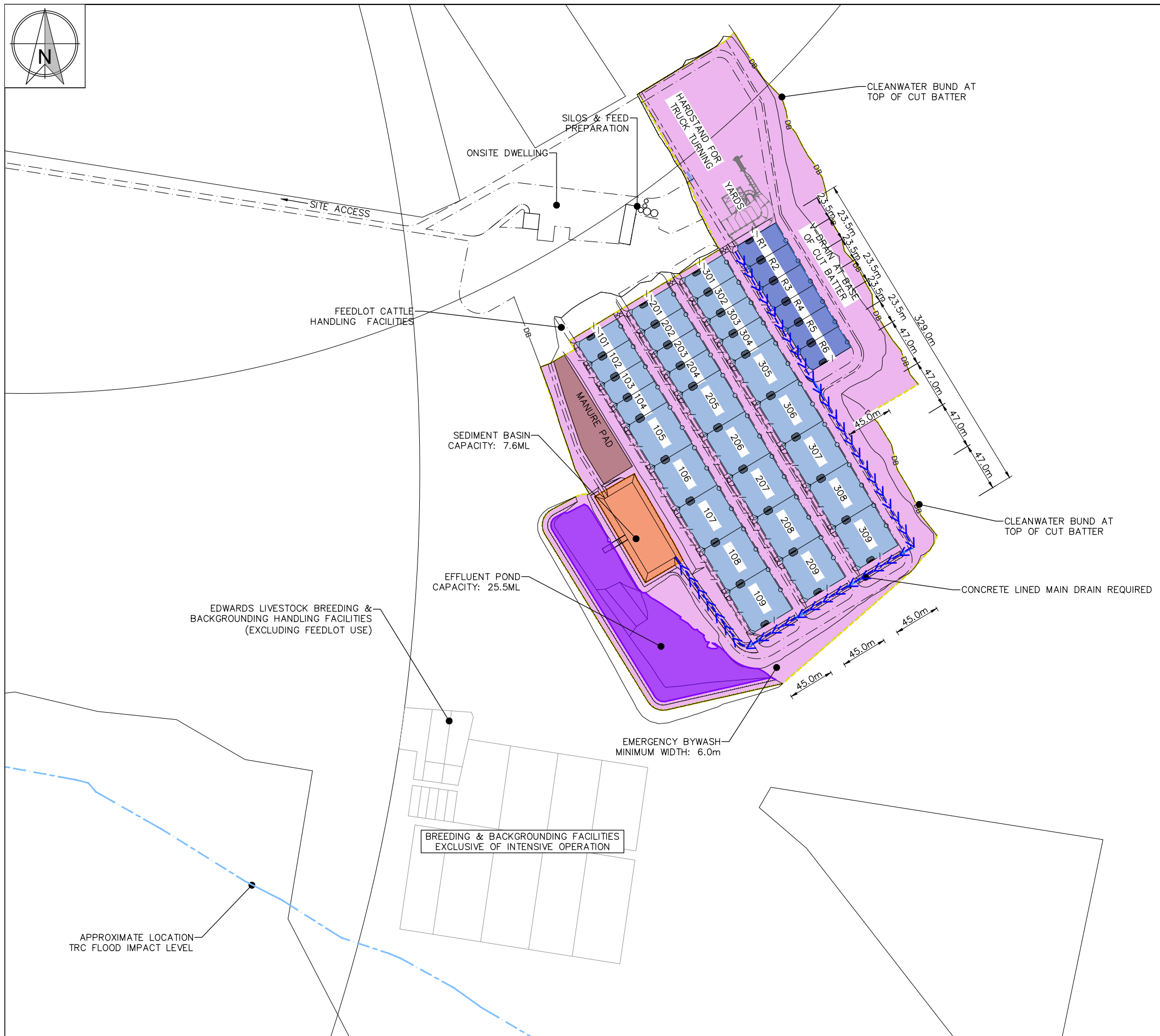
TOOWOOMBA REGIONAL COUNCIL

APPROVED PLAN

referred to in Council's Decision Notice dated
28 April 2026

This plan is subject to conditions of Approval Number
MCUI/2025/4656

Assessment Manager



CLIENT
EDWARDS LIVESTOCK COMPANY PTY LTD

PROJECT
SILVERBROOK FEEDLOT

LOCATION
2 SCHULLS ROAD, DEVON PARK QLD 4401

SHEET TITLE
CONTROLLED DRAINAGE AREA

AGRICULTURAL DEVELOPMENT SERVICES AUSTRALIA

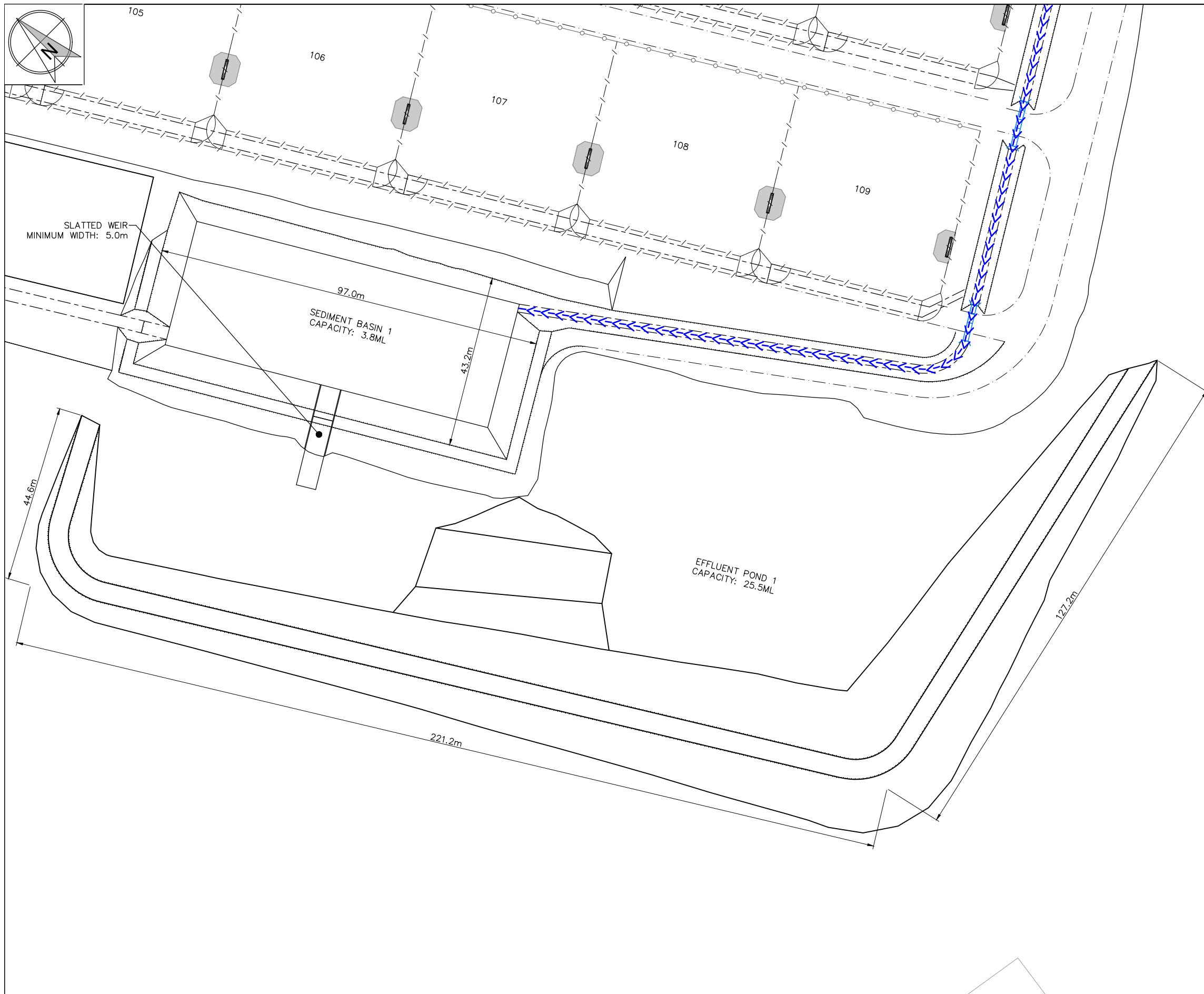
PO BOX 292
TOOWOOMBA QLD 4350
PH: +61 473 171 957
E: contact@agdsa.com.au

SCALE

SCALE 1:2,000 (A1) 1:4,000 (A3)

EDWARDS LIVESTOCK COMPANY PTY LTD

DESIGNED TJS	FOR APPROVAL ONLY			JOB CODE ELC-002
CHECKED MRN				SHEET NUMBER P205
PROJECT MANAGER MRN	5/12/2025	A1	ORIGINAL ISSUE FOR APPROVAL ONLY	CURRENT REVISION A1
	DATE	REV	DESCRIPTION	MRN APP
REVISIONS				



- LEGEND**
- MAXIMUM DRAIN LENGTH = 640m
 - CLEAN WATER DIVERSION BANK
 - PEN FENCE
 - CATTLE LANE
 - FEED BUNK
 - EFFLUENT DRAIN
 - FEED ROAD

- NOTES**
1. FEATURES MAY HAVE BEEN DIGITISED FROM PLANS OR AERIAL PHOTOGRAPHS AND ACCURACY IS LIMITED.
 2. THE REQUIRED SEDIMENT BASIN AND EFFLUENT HOLDING POND CAPACITIES HAVE BEEN DETERMINED IN ACCORDANCE WITH THE QLD DAF FEEDLOT GUIDELINES. THE INPUT DATA USED FOR THE SPREADSHEET CALCULATIONS IS CONSISTENT WITH THE CATCHMENT DETAILS PROVIDED IN THIS DRAWING AND THE EFFLUENT REUSE AREAS OUTLINED IN P205.

TOOWOOMBA REGIONAL COUNCIL

APPROVED PLAN

referred to in Council's Decision Notice dated
28 April 2026

This plan is subject to conditions of Approval Number
MCUI/2025/4656

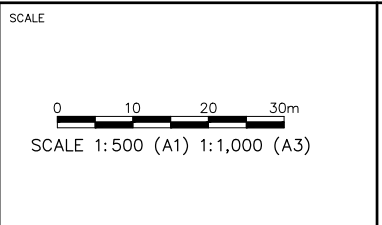
Assessment Manager

CLIENT
EDWARDS LIVESTOCK COMPANY PTY LTD

PROJECT
SILVERBROOK FEEDLOT

LOCATION
2 SCHULLS ROAD, DEVON PARK QLD 4401

SHEET TITLE
EFFLUENT MANAGEMENT



EDWARDS LIVESTOCK COMPANY PTY LTD

DESIGNED TJS	FOR APPROVAL ONLY			JOB CODE ELC-002
CHECKED MRN				SHEET NUMBER P207
PROJECT MANAGER MRN	5/12/2025	A1	ORIGINAL ISSUE FOR APPROVAL ONLY	CURRENT REVISION A1
	DATE	REV	DESCRIPTION	MRN APP
REVISIONS				

JOB CODE
ELC-002

SHEET NUMBER
P207

CURRENT REVISION
A1