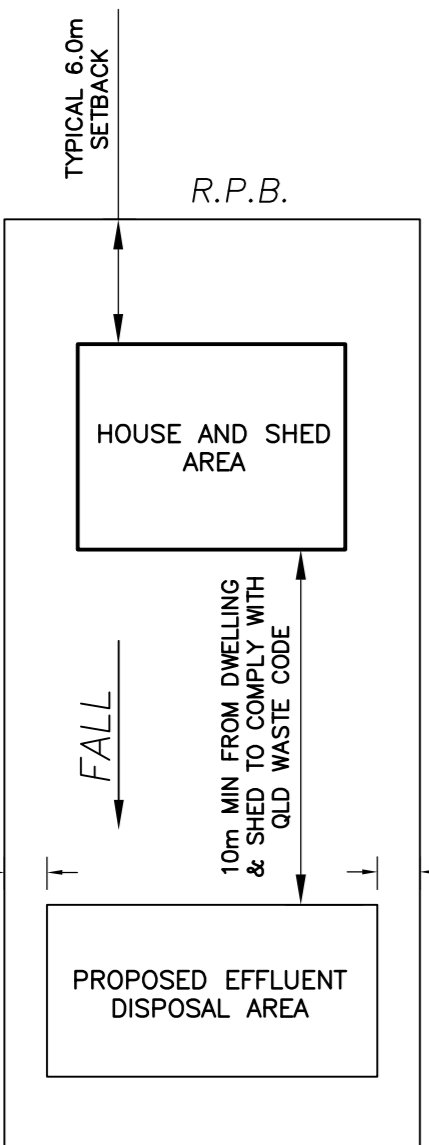


POTENTIAL ABOVE GROUND SPRAY OUT AREA FOR HOUSE HOLD WASTES **450sqm.** TO FUTURE DESIGN AND DETAIL. TYPICAL.

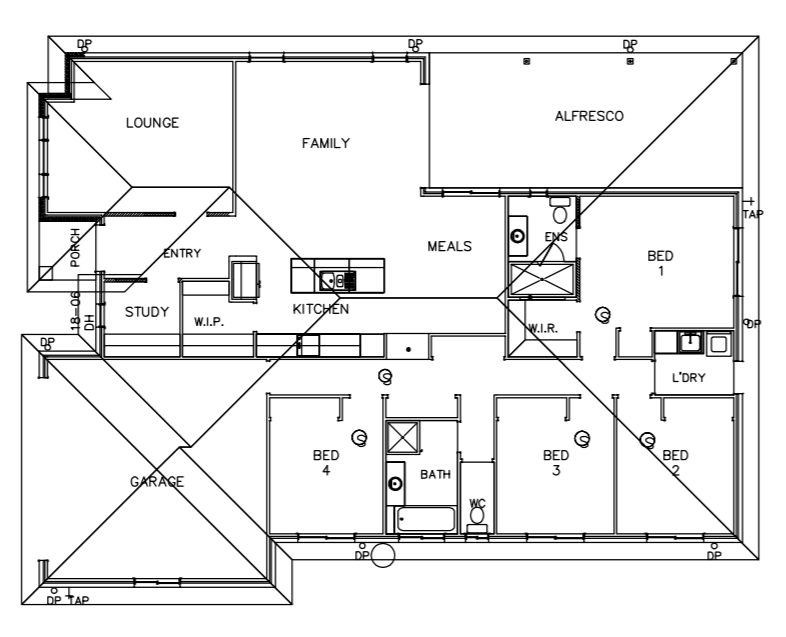
POTENTIAL ABOVE GROUND SPRAY OUT AREA FOR HOUSE HOLD WASTES **450sqm.** TO FUTURE DESIGN AND DETAIL. TYPICAL.

POTENTIAL ABOVE GROUND SPRAY OUT AREA FOR HOUSE HOLD WASTES **450sqm.** TO FUTURE DESIGN AND DETAIL. TYPICAL.

**RECEIVED**  
01/06/2026  
**TOOWOOMBA REGIONAL COUNCIL**



**GENERAL BOUNDARY OFFSET DETAILS - DIAGRAMMATICALLY DEPICTED**  
NOT TO SCALE



**TYPICAL HOUSE 4 BEDROOMS - CONCEPTUAL**  
NOT TO SCALE

Scale: 1:200 (Horizontal)  
Contour intervals 0.1m

**COPYRIGHT**  
COPYRIGHT EXISTS ON ALL PLANS & DESIGNS PRODUCED BY REID CONSULTING ENGINEERS PTY LTD. THESE DRAWINGS SHALL NOT BE REPRODUCED IN PART OR IN FULL WITHOUT WRITTEN APPROVAL FROM THIS COMPANY.  
ORIGINAL COPY OF DRAWING HAS BEEN PRODUCED AT A1 SIZE. DRAWINGS REPRODUCED AT A DIFFERENT SIZE ARE NOT TO SCALE. DO NOT SCALE DRAWINGS. USE FIGURED DIMENSIONS ONLY. VERIFY ALL DIMENSIONS AND SITE CONDITIONS PRIOR TO COMMENCING WORK.

B	10/03/26	DKS	REVISED BUILDING LOCATION AND DRIVEWAYS
A	17/11/25	KGB	INITIAL ISSUE
NO.	DATE	CONTR.	REVISION

**Reid**  
CONSULTING ENGINEERS  
REID CONSULTING ENGINEERS PTY LTD

OFFICE: 106 Herries Street Toowoomba Qld 4350  
POSTAL: PO Box 614 Toowoomba Qld 4350  
DIRECTORS: Lindsay B. Reid  
REGISTERED: BE(Hons)1, ME(Aust), RPEQ, CP(Eng), NER, APEC(Engineer), RP(CE)(Aus)  
Shayne P. Cleary

PHONE: 07 4639 2800  
MOBILE: 0408 392 000 (Lindsay B. Reid)  
0417 050 173 (Shayne P. Cleary)  
EMAIL: mail@reidconsulting.com.au  
WEB: www.reidconsulting.com.au  
ABN: 77 096 964 493

<b>STEINMULLER CONSTRUCTIONS</b>			
DESIGNED: LBR/SPC	DRAWN: KGB	CHECKED: LBR	
DATE: 17/11/25	APPROVED:	DATE: RPEQ 2014	

PROPOSED DEVELOPMENT AT No. 185 (LOT 15 ON SP295684) POSTLE STREET, MOUNT RASCAL  
POTENTIAL EFFLUENT DISPOSAL AND SITE LAYOUT PLAN

SCALE: A1 - 1:200  
A3 - 1:400

DRAWING NO: 28465  
NO. SHEETS: 2  
SHEET: B | A1